



THE STAGING POST

HOUNSLOW TW3

1 CLARKE AVENUE 2 BEDROOM

INDOOR AREAS

KITCHEN

15'0" x 11'3"
4.56m x 3.44m

W.C

6'8" x 4'9"
2.02m x 1.45m

LIVING ROOM

20'5" x 11'9"
6.22m x 3.59m

BEDROOM 1

16'8" x 9'6"
5.07m x 2.90m

BATHROOM

7'1" x 6'9"
2.15m x 2.05m

BEDROOM 2

16'8" x 9'0"
5.07m x 2.75m

TOTAL INDOOR AREA

1,095 SQ FT

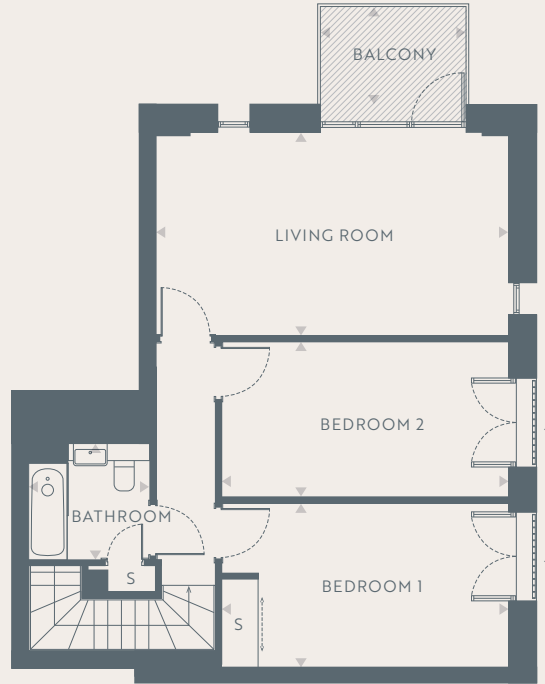
101.70 SQ M

BALCONY

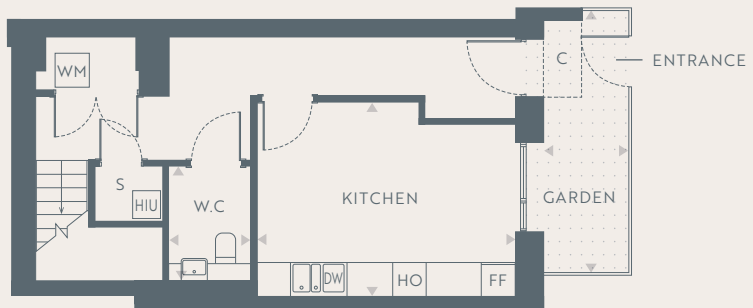
8'5" x 5'8"
2.58m x 1.73m

FRONT GARDEN

15'2" x 4'11"
4.63m x 1.50m

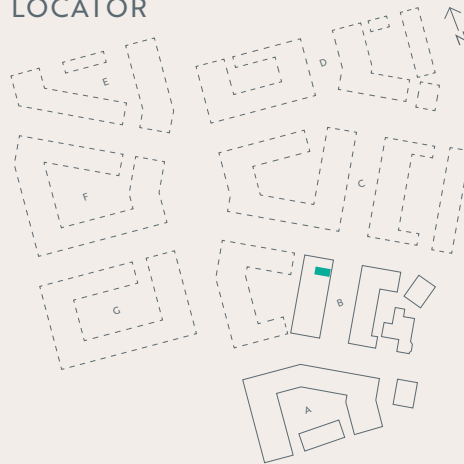


FIRST FLOOR



GROUND FLOOR

LOCATOR



KEY

FF	FRIDGE FREEZER
DW	DISH WASHER
C	CANOPY
S	STORAGE
HO	HOB & OVEN
WM	WASHING MACHINE
J	JULIETTE BALCONY
HIU	HEATING INTERFACE UNIT

— PHASE ONE

- - - PROPOSED NEXT PHASE
(SUBJECT TO CHANGE)

Floorplans are for illustrative purposes only, not to scale and should only be used for guidance. Any measurements quoted are approximations. Please ask your sales advisor about any of these details at the time of purchase.