



# THE STAGING POST

HOUNSLOW TW3

## 3 CLARKE AVENUE 2 BEDROOM

### INDOOR AREAS

#### KITCHEN

16'0" x 9'8"  
4.87m x 2.94m

#### W.C

6'8" x 8'9"  
2.67m x 1.45m

#### LIVING ROOM

20'5" x 10'6"  
6.21m x 3.21m

#### BEDROOM 1

16'7" x 9'0"  
5.06m x 2.75m

#### BATHROOM

7'1" x 6'9"  
2.15m x 2.05m

#### BEDROOM 2

16'7" x 9'0"  
5.06m x 2.75m

#### TOTAL INDOOR AREA

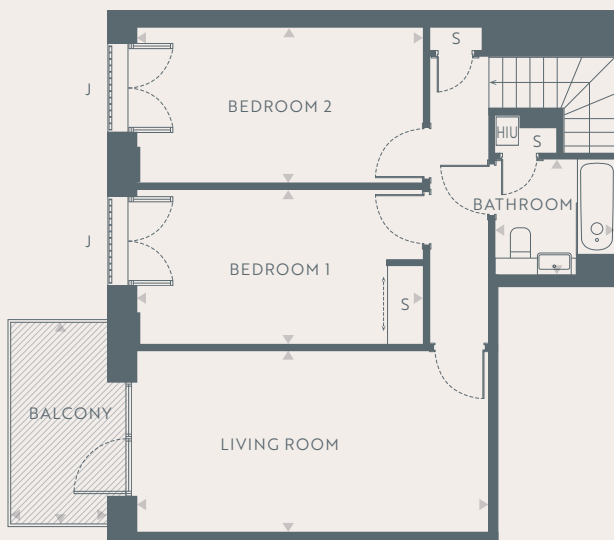
**1,105 SQ FT**  
**102.70 SQ M**

#### BALCONY

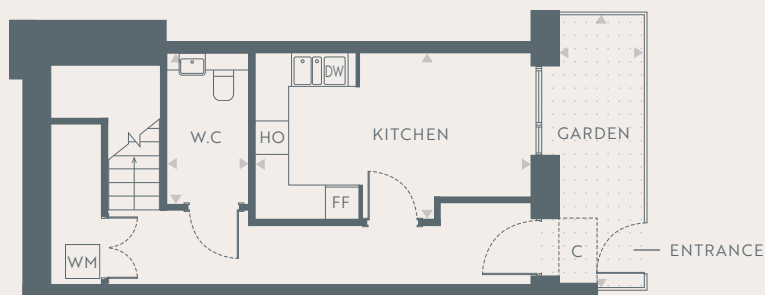
11'8" x 5'9"  
3.56m x 1.75m

#### FRONT GARDEN

15'10" x 4'11"  
4.82m x 1.50m

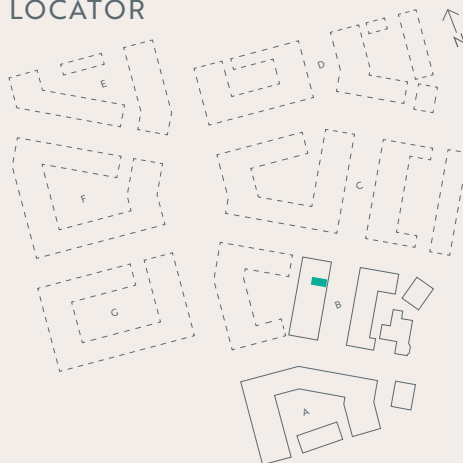


FIRST FLOOR



GROUND FLOOR

### LOCATOR



#### KEY

- FF FRIDGE FREEZER
- DW DISH WASHER
- C CANOPY
- S STORAGE
- HO HOB & OVEN
- WM WASHING MACHINE
- J JULIETTE BALCONY
- HIU HEATING INTERFACE UNIT

- PHASE ONE
- - - PROPOSED NEXT PHASE (SUBJECT TO CHANGE)

Floorplans are for illustrative purposes only, not to scale and should only be used for guidance. Any measurements quoted are approximations. Please ask your sales advisor about any of these details at the time of purchase.