



# THE STAGING POST

HOUNSLOW TW3

## 5 CLARKE AVENUE 2 BEDROOM

### INDOOR AREAS

#### KITCHEN

15'0" x 11'1"  
4.57m x 3.39m

#### W.C

6'7" x 4'9"  
2.00m x 1.45m

#### LIVING ROOM

20'5" x 10'7"  
6.22m x 3.23m

#### BEDROOM 1

16'8" x 9'0"  
5.07m x 2.75m

#### BATHROOM

7'1" x 6'9"  
2.15m x 2.05m

#### BEDROOM 2

16'8" x 9'0"  
5.07m x 2.75m

#### TOTAL INDOOR AREA

**1,066 SQ FT**

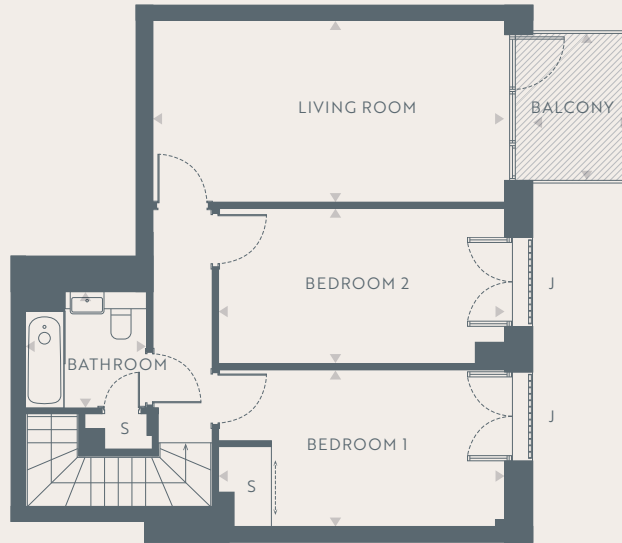
**99.00 SQ M**

#### BALCONY

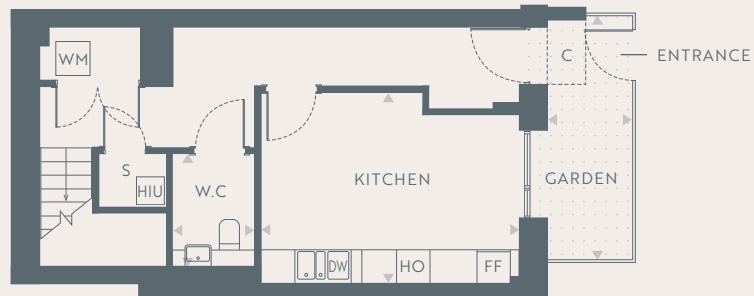
8'7" x 5'9"  
2.62m x 1.75m

#### FRONT GARDEN

14'2" x 4'11"  
4.31m x 1.50m

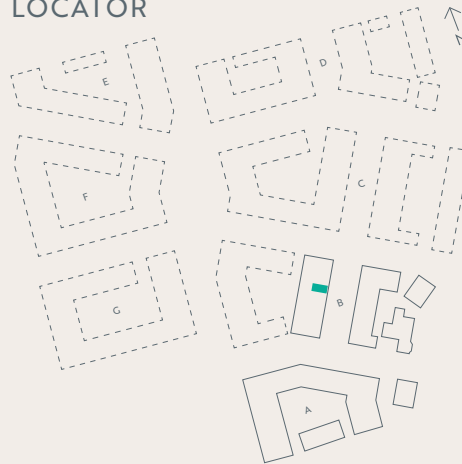


FIRST FLOOR



GROUND FLOOR

### LOCATOR



#### KEY

FF	FRIDGE FREEZER
DW	DISH WASHER
C	CANOPY
S	STORAGE
HO	HOB & OVEN
WM	WASHING MACHINE
J	JULIETTE BALCONY
HIU	HEATING INTERFACE UNIT

— PHASE ONE

- - - PROPOSED NEXT PHASE  
(SUBJECT TO CHANGE)

Floorplans are for illustrative purposes only, not to scale and should only be used for guidance. Any measurements quoted are approximations. Please ask your sales advisor about any of these details at the time of purchase.